

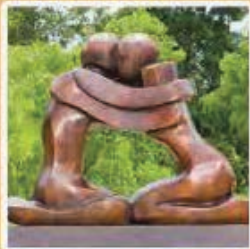
## HISTORY | ART | NATURE

Since 1921, this international heritage site has been the location of civic ceremonies, celebrations, festivals, annual events, historical reenactments, weddings, and family gatherings.

The park features magnificent gardens, interpretive displays, annual outdoor sculpture exhibit, spectacular sunsets, ocean views, picnic areas, and a playground. Pets are allowed on leashes.

SCULPTURE

### EXHIBITION



### INTERPRETIVE OPPORTUNITIES

EDUCATIONAL



FLORAL DISPLAYS



### GROUP TOURS

Park history and art tours offer authentic experiences that educate and engage tour groups and students alike. Tours are available during regular park hours and must be scheduled a minimum of one week in advance of your tour date.

If your tour group or students would like to explore the park on a guided tour, contact the Peace Arch Association at 360.332.7165 or email us at [info@peacearchpark.org](mailto:info@peacearchpark.org)

## PEACE ARCH PARK SNACK SHACK



**OPEN**  
Friday, Saturday  
& Sunday  
11 am to 5 pm

**ICE CREAM • BEVERAGES • SNACKS • SOUVENIRS**

*Treat yourself for a good cause!* Support the work of the International Peace Arch Association by purchasing snacks and unique gifts to commemorate your park visit.

## LOCATION

Peace Arch International Parks are located 21 miles north of Bellingham, Washington, and 30 miles south of Vancouver, BC, on the USA-Canada border between Douglas, BC, and Blaine, WA. The parks are managed and maintained by Washington State Parks and British Columbia Parks.



Washington State Parks requires state residents and visitors to purchase a Discover Pass (vehicle parking pass) to park at Peace Arch State Park. The Discover Pass fee is \$10 per day or \$30 for an annual pass that can be used at all Washington State Parks. Complete Discover Pass information and a parking payment station are located at the main park kiosk.

*The International Peace Arch Association (IPAA) is a privately funded non-profit association dedicated to the heritage and preservation of the Peace Arch and the international parks. The IPAA is an IRS approved non-profit charitable organization.*



International Peace Arch Association (IPAA)  
PO Box 2564  
Blaine, WA 98231-2564  
Phone 360.332.7165  
[info@peacearchpark.org](mailto:info@peacearchpark.org)

## PEACE ARCH INTERNATIONAL PARK

AND NATIONAL HISTORIC SITE



### CELEBRATING A CENTURY!

North America's first and foremost International Peace Park was dedicated by the citizens of the United States and Canada on September 6th, 1921.

Located on the international boundary between Blaine, Washington, and Douglas, British Columbia, this world famous peace park and monument is rich with history, culture, and natural beauty.



**OPEN DAILY 8 AM TO DUSK.**

*This brochure is courtesy of the International Peace Arch Association.*

**Visit our Snack Shack located in front of the west end of the parking area.**



# WELCOME

ENGLISH

환영합니다  
*Korean*

Karibu  
*Swahili*

Bienvenue  
*French*

Velkomin  
*Icelandic*

دمأ شروخ  
*Persian*

добро пожаловать  
*Russian*

גונגריקא  
*Yiddish*

Καλός ήλθατε  
*Greek*

歡迎  
*Chinese*

welkom  
*Dutch*

Bienvenido  
*Spanish*

Bun venit  
*Romanian*

Chào mừng các bạn  
*Vietnamese*

You're invited to enjoy the park's magnificent gardens and experience the International Sculpture Exhibition, Hands Across the Border Celebration, a historical reenactment, group tours, or a peace education outreach program.

We bring together the young and old, friends and strangers, tourists and residents alike, to honor and remember the founders of the International Peace Arch and their mission of peace.

The International Peace Arch Association depends on the gracious and generous support of donors, sponsors, and volunteers to hold our annual programs.

We invite you to get involved and learn more about how you can support our unique mission. Connect with us at [info@peacearchpark.org](mailto:info@peacearchpark.org) or at 360.332.7165.



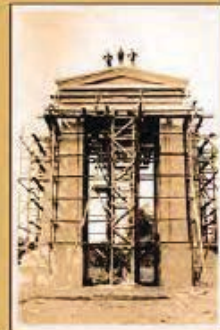
## THE HISTORY OF A PEACE PARK

The Peace Arch stands on the international boundary between Blaine, Washington, and Douglas, British Columbia. The Arch was constructed to commemorate the centennial (1814-1914) of the signing of the Treaty of Ghent on December 24, 1814. The Treaty of Ghent ended the war of 1812 between the United States and Great Britain, a conflict that was waged in North America and involved Canadians as well as Americans and British.

In 1914, the international fund-raising efforts for the Arch were spearheaded by Samuel Hill, famed Washington State lawyer, financier, road builder, and humanitarian, who later dedicated it on September 6, 1921. The Arch's design was donated by H.W. Corbett, an internationally known architect. Construction began under an international force of volunteers in 1920.



Samuel Hill  
1856-1931



Construction of the  
Peace Arch, 1920

Standing 67 feet high, the Peace Arch is made of concrete and reinforced steel with one foot anchored in each country. Its foundation consists of 76 fourteen-inch pilings driven 25-30 feet into the earth. The Arch was said to be one of the first structures in North America constructed to be earthquake proof. The 3500 sacks of concrete for the Arch's foot walls were donated by R. P. Butchart, of Victoria, British Columbia's Butchart Gardens fame. E.H. Gary of New York donated 50 tons of steel.

Originally, 470 lights were "artistically set" up and down the massive pilasters and along the interior frieze of the Arch. The American side of the Arch is inscribed with the words "Children of a Common Mother," the Canadian side with the words "Brethren Dwelling Together in Unity." Within the portal of the Arch on the west side are the words "1814 Open One Hundred Years 1914" and on the east side, "May These Gates Never Be Closed."

Two bronze plaques are placed above the exterior foot walls of the Arch. One is of the Canadian steamship the Beaver;



Peace Arch Dedication, September 6, 1921

the other of the Mayflower. Wooden relics, allegedly cut from each ship, were sealed behind each plaque when the Arch was dedicated in 1921.

The shrubbery in the gardens of the original seven-acre park that surrounded the Arch was donated by Robert Moran, the famed shipbuilder who built Rosario Mansion (Rosario Resort) on Orcas Island, Washington. In 1931, the expansion of the park to 40 acres was made possible with the help of school children from Washington State and British Columbia, who donated their pennies, nickels, and dimes to the project.

Today, the international park's picturesque gardens are the home of over 200 perennials and 20,000 annuals that are planted each year. The park hosts multicultural and family gatherings, picnics, weddings, civic events, and annual events of international significance. These include the Int. Peace Arch Association's historical celebrations, the International Sculpture Exhibition, and annual Hands Across the Border Celebration that was first held on International Armistice Day in 1937.

Annually, 9.2 million tourists and community members pass through the park as they travel from country to country, and over 650,000 visitors tour this international historic site yearly.

The International Peace Arch is one of the few landmarks in the world listed on the National Historic Registries of two different countries. The history of the Peace Arch reflects more than our past; its existence gives meaning to our present.

As we celebrate its centennial, the Peace Arch remains a beacon of hope for Americans, Canadians, and the world.

Photos courtesy of the International Peace Arch Association, the Maryhill Museum of Art, and the Whatcom Museum

To learn more about the Peace Arch centennial or to share your Peace Arch story, visit us at [peacearchpark.org](http://peacearchpark.org).